

Laboratory Formula DermaCare Series

Glucosamine Relief



Glucosamine Relief's concentrated formula delivers comforting fast relief to aches and pains of muscles and joints associated with arthritis, muscle sprains and bruises. It uses a new state-of-the-art technology called Fuzion Technology by utilizing a special combination of gases to help the active ingredients penetrate deeper into the skin and optimize absorption. The easy-to-use spray and massage application system makes it easy to massage the painful area and together with its bubbling effect eliminating the feeling of greasiness. It's a fast acting, long lasting relief spray which you can use anytime and anywhere.

LABORATORY FORMULA
DermaCare **SERIES**

Exclusively Distributed by
LFI (Singapore) Private Limited
36 Kaki Bukit Place LFI Business Centre #04-01
Singapore 416214

www.lfintlgroup.com

LABORATORY FORMULA
DermaCare **SERIES**



Glucosamine Relief

For Joint & Muscle Recovery

Introduction

Osteoarthritis is the most common form of arthritis, it breaks down the cartilage in the joints. The cartilage is the slippery tissue that covers the ends of bones in a joint. Healthy cartilage enables the absorption of shock movement, thus when your cartilage deteriorates, the bones will rub against each other and eventually cause permanent damage to the joint. This will result in pain, swelling and reduced motion in the joints especially in areas like the hands, knees, hips or spine. Factors that may cause osteoarthritis include being overweight, getting old and injury.

Why Do I Need Glucosamine Relief?

Glucosamine is a key component of cartilage as it stimulates joint function and repair. It has proven to be effective and beneficial in numerous scientific trials in easing osteoarthritis pain, assisting in the rehabilitation of cartilage, renewing synovial fluid and repairing joints that have been damaged by osteoarthritis. The human body produces a certain amount of glucosamine. However, as one grows older, the body loses the capacity to produce adequate glucosamine. Having sufficient glucosamine in your body is essential in producing the nutrients needed to stimulate the production of synovial fluid, which



...delivers comforting fast relief to aches and pains of muscles and joints associated with arthritis, muscle sprains and bruises.

is essential in lubricating the cartilage and keeping the joints healthy. With insufficient glucosamine, the cartilage in weight-bearing joints such as the hips, knees, and hands deteriorates. The cartilage then hardens and forms bone spurs, deformed joints, and limited joint movement. This is how the debilitating disease of osteoarthritis develops.

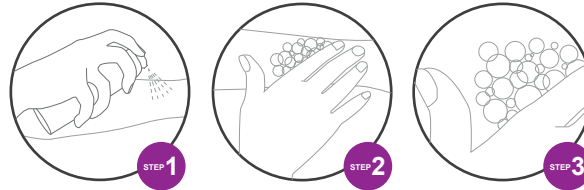
How Does Glucosamine Relief Work?

Glucosamine pain relief spray uses a new state-of-the-art technology called *Fuzion Technology* by utilizing a special combination of gases to help the active ingredients penetrate deeper into the skin and optimize absorption. The concentrated

formula also delivers comforting fast relief to aches and pains of muscles and joints associated with arthritis, muscle sprains and bruises. The easy-to-use spray application system makes it easy to massage the painful area and together with its bubbling effect eliminating the feeling of greasiness. Enriched with glucosamine sulphate, methylsulfonylmethane (MSM) and chondroitin sulphate along with naturally warming Capsaicin and multi-beneficial plant extract, it ensures an efficacious cartilage protection and helps in joint-mobility recovery. It's a fast acting, long lasting relief spray which you can use anytime and anywhere.

Application

For optimal benefit, spray Galucosamine Relief generously onto the painful joints or muscle areas 2-3 times daily. Cover the spray area and press on the bubbles with your palm until the product absorbs fully into the skin.



Active Ingredients

An in-depth research has enabled us to work out a formulation, which is able to enhance the specific capacity of each and every plant, as well as to benefit from the harmonious synergy of the entire complex.

JOINTS-FRIENDLY INGREDIENTS

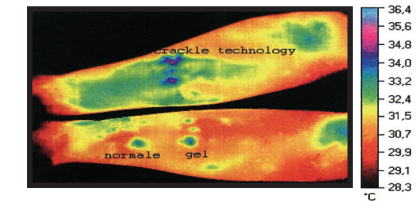
- Glucosamine Sulphate
- Chondroitin Sulphate
- MSM (methyl sulphonyl methane)
- Scleroglucan
- Aescin
- Methyl Salicylate
- Rosemary
- Aloe arborescens
- Devil's claw
- Liquorice
- Honey
- Arnica montana
- Red chilli pepper
- Blackcurrant

Maximum Benefits

- Fast-working pain-relief solution that absorbs quickly to deliver real pain-relief
- Non-greasy application
- Anti-inflammatory properties
- Enhances the transfer of nutrients through cell membranes
- Aids joint movement (flexibility)
- No side effects
- G-amino bypasses the gastrointestinal tract and is less likely to cause stomach upset, ulcer, and bleeding.

Results

The image below is the thermal condition of the forearm after 5 minutes from application of the three formulations. The temperature rise is shown by the appearance of a blue-violet colour on the outer edge of each area. The area treated with the Fuzion technology is more blue-violet and shows a significantly higher temperature increase ($p < 0.05$) compared to the other two.



Compared with other pain relief products in the market

- Ibuprofen is another pharmaceutical ingredient used in the market for pain relief. Researches have shown that Glucosamine Sulfate reduced pain more effectively than ibuprofen. That was the result of a double blind study which was carried out over an eight week period with 40 out-patients who had been diagnosed with unilateral osteoarthritis of the knee.
- Most cream containing glucosamine tends to contain low concentration as it is highly unstable and tends to separate and lack efficacy.

FUZION TECHNOLOGY

HOW IT WORKS?

The liquid is dispensed on the body surface to be treated from a pressurized vessel which contains them.

This unique combination of gasses (propane, butane and isobutane) has the capacity to "boil" at very low temperatures. The propellant evaporates from liquid to gaseous as it exits from the pressurized vessel and upon contact with the body surface to be treated, forming gas bubbles in the gel.

The bursting of these bubbles increases the kinetic energy of the gel with the active ingredient, consequently increasing the absorption rate in the layers of the skin.

This exceptional technique helps optimize and extend the properties of the natural components contained. This allows a better penetration into the epidermis and leaves a perfectly dry and smooth skin.