

Laboratory Formula DermaCare Series

# Anti-Cellulite Spray



**Anti-Cellulite Spray** is the answer to all your cellulite problems! It contains active ingredients like Aloe Vera, Birch Extract, Caffeine, Carnitin, Genistein, Green Tea, Theobromine and Bromelain whereby it reactivates the microcirculation of the affected areas, stimulates the metabolism, and acts as an anti-oxidant while it softens the skin. It significantly reduces the skin imperfections caused by the cellulite thus improving the skin appearance.

LABORATORY FORMULA  
DermaCare **SERIES**

**Exclusively Distributed by**  
LFI (Singapore) Private Limited  
36 Kaki Bukit Place LFI Business Centre #04-01  
Singapore 416214

[www.lfintlgroup.com](http://www.lfintlgroup.com)

LABORATORY FORMULA  
DermaCare **SERIES**



# Anti-Cellulite Spray

Reduces Skin Imperfections

## Introduction

Cellulite! A taboo for all women! Cellulite is the word that is used to describe pockets of fat which are trapped underneath the skin causing dimpling in the skin. This dimpling is irregular and patchy similar to an orange peel. It is known as adiposis edematosa, dermopanniculosis deformans, status protrusus cutis, and gynoid lipodystrophy in the medical field and as orange peel syndrome, cottage cheese skin, hail damage, and the mattress phenomenon in colloquial language. 90% of post-adolescence women develop



cellulite at some time during their life and the thighs, buttocks and the abdomen are the most common areas for cellulite development. It's a myth to think that only obese people are more prone to getting cellulite yet thin people are not immune.

### Why Do I Need Anti-Cellulite Spray?

Laboratory Formula's Anti-Cellulite Spray is the answer to all your cellulite problems! With its revolutionary cosmetics technology using fuzion technology, it enables the penetration of its active ingredients effectively to the dermis layer of the skin to target

...It significantly reduces the skin imperfections caused by the cellulite thus improving the skin appearance.

cellulite. The kinetic energy produced by massaging the area allows the Anti-Cellulite spray to take effect within the first 5 minutes thus enhancing the product's absorption into the affected areas.

### How Does Anti-Cellulite Spray Work?

Laboratory Formula's Anti-Cellulite Spray contains active ingredients like Aloe Vera, Birch Extract, Caffeine, Carnitin, Genistein, Green Tea, Theobromine and Bromelain whereby it reactivates the microcirculation of the affected areas, stimulates the metabolism, and acts as an anti-oxidant while it softens the skin. It significantly reduces the skin imperfections caused by the cellulite thus improving the skin appearance.

## 5 Combined Actions

1. Reactivation Of The Microcirculation
2. Draining
3. Stimulating The Metabolism
4. Anti-Oxidant
5. Soothing & Smoothing

## Charts and Results

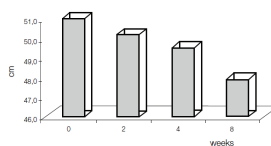
### - Clinical Analysis:

- A group of 20 healthy female volunteers were chosen to conduct a clinical test on the effectiveness of Anti-Cellulite Spray. This test was conducted following the ethical principles on medical research.
- INSTRUCTIONS ON APPLICATION OF THE PRODUCT: Product was applied pure (not diluted) on clean skin with a light circular massaging motion until completely absorbed. Three knobs of product was the quantity put on each leg twice a day (in the morning and again in the evening).
- PARAMETERS CONSIDERED: At the moment of recruitment and after 2, 4 and 8 weeks after the first application of the product. The following clinical and instrumental parameters were registered.

### - Measurements:

Volunteer Number	T0	T2	T4	T8
01CP	51.0	50.4	49.5	47.0
02BL	48.6	48.2	48.2	48.0
03AA	48.0	48.0	46.4	44.0
04AF	48.6	46.5	46.0	46.0
05SF	43.0	43.2	43.0	40.4
06AG	53.0	50.0	53.0	51.0
07GM	46.5	46.0	46.4	44.0
08SD	47.0	45.0	42.8	42.0
09VD	56.8	53.9	53.0	52.0
10TML	50.8	49.8	50.0	48.0
11CA	67.3	67.0	67.0	65.2
12CL	58.9	56.6	56.0	53.6
13DP	56.0	55.0	55.0	52.8
14GG	47.6	48.0	47.8	48.0
15BA	56.4	55.4	55.0	53.2
16AA	50.0	51.2	50.6	48.6
17MA	45.6	44.8	43.0	42.1
18GA	48.4	48.0	47.6	44.4
19MN	53.2	52.6	51.2	49.4
20SIS	50.4	49.6	48.4	46.0
<b>Average</b>	<b>50.1</b>	<b>50.2</b>	<b>49.5</b>	<b>47.0</b>
Margin of error	1.0	0.9	1.0	1.0

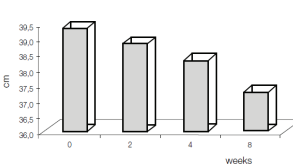
### THIGH CIRCUMFERENCE MEASUREMENTS



Treatment with Anti-Cellulite Spray being tested produces a time proportionate to thigh circumference thinning. Maximum reduction value (3.1cm) was registered 8 weeks after the beginning of the program.

Volunteer Number	T0	T2	T4	T8
01CP	39.0	38.5	38.0	37.1
02BL	37.4	37.0	36.4	36.0
03AA	38.0	38.0	36.0	33.3
04AF	40.0	40.0	40.0	37.4
05SF	38.0	38.0	36.5	36.4
06AG	42.0	42.6	41.0	40.2
07GM	42.0	41.5	41.0	40.0
08SD	38.8	38.6	38.0	35.0
09VD	43.8	42.0	42.4	41.8
10TML	39.0	38.1	37.6	36.4
11CA	45.4	45.0	44.4	43.0
12CL	45.0	44.0	44.0	42.2
13DP	31.4	31.0	30.2	29.8
14GG	37.8	37.8	37.8	38.0
15BA	38.5	38.0	36.6	34.2
16AA	40.2	40.0	39.5	37.6
17MA	38.4	38.0	37.6	36.2
18GA	38.6	38.0	38.2	38.2
19MN	42.2	38.4	38.0	38.6
20SIS	42.6	42.0	41.2	40.4
<b>Average</b>	<b>39.3</b>	<b>38.8</b>	<b>38.6</b>	<b>37.2</b>
Margin of error	0.8	0.8	0.8	0.8

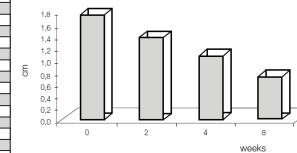
### KNEE CIRCUMFERENCE MEASUREMENTS



Treatment with Anti-Cellulite Spray being tested produces a time proportionate to knee circumference thinning. Maximum reduction value (2.1cm) was registered 8 weeks after the beginning of the program.

Volunteer Number	T0	T2	T4	T8
01CP	1	1	1	0
02BL	0	0	0	0
03AA	0	0	0	0
04AF	3	2	2	2
05SF	2	1	1	1
06AG	3	3	3	2
07GM	1	0	0	0
08SD	0	0	0	0
09VD	2	1	1	1
10TML	2	2	2	1
11CA	2	2	1	1
12CL	3	2	2	1
13DP	1	0	0	0
14GG	1	1	1	0
15BA	3	3	3	2
16AA	2	2	2	1
17MA	3	3	2	2
18GA	2	1	1	0
19MN	3	2	1	0
20SIS	1	1	1	0
<b>Average</b>	<b>1.8</b>	<b>1.4</b>	<b>1.3</b>	<b>0.7</b>
Margin of error	2.0	1.0	1.0	0.5

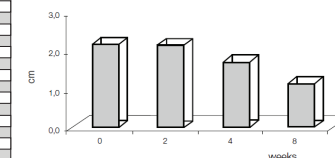
### TENDERNESS TO PALPATION



Treatment with Anti-Cellulite Spray being tested produces a reduction of the clinical parameter "tenderness to palpation". This reduction is to be associated with an improvement of subcutaneous blood perfusion.

Volunteer Number	T0	T2	T4	T8
01CP	2	2	2	1
02BL	2	2	1	1
03AA	1	1	0	0
04AF	3	3	3	2
05SF	3	3	3	2
06AG	3	3	2	2
07GM	2	2	2	1
08SD	1	1	1	0
09VD	2	2	1	1
10TML	2	2	2	1
11CA	3	3	3	2
12CL	3	3	3	2
13DP	1	1	1	0
14GG	1	1	0	0
15BA	3	3	2	2
16AA	3	3	3	2
17MA	2	2	2	1
18GA	2	2	2	1
19MN	2	2	1	1
20SIS	1	1	1	0
<b>Average</b>	<b>2.1</b>	<b>2.1</b>	<b>1.7</b>	<b>1.1</b>
Margin of error	2.0	2.0	2.0	1.0

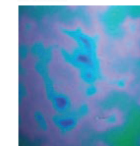
### TERMOMOGRAPHY



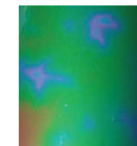
Treatment with Anti-Cellulite Spray being tested produces an improvement of subcutaneous blood perfusion.

### - Thermography Images

#### BEFORE

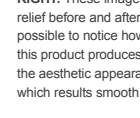


#### AFTER

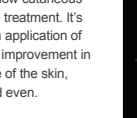


LEFT: Picture 1, taken before the beginning of the treatment, shows a thermographic image known as "leopard-skinned" indicating cellulite at its 3rd stage. Picture 2, taken after the end of the treatment, shows a thermographic image closer to normality and thus indicating cellulite at its 1st/2nd stage.

#### BEFORE



#### AFTER



RIGHT: These images show cutaneous relief before and after the treatment. It's possible to notice how an application of this product produces an improvement in the aesthetic appearance of the skin, which results smooth and even.

### - Conclusion

- Had a positive influence on the parameters taken into consideration in all tested subjects
- Produces a thinning of thighs and knees
- Produces an improvement of subcutaneous blood perfusion in treated areas
- Reduces skin imperfections caused by cellulite improving skin appearance